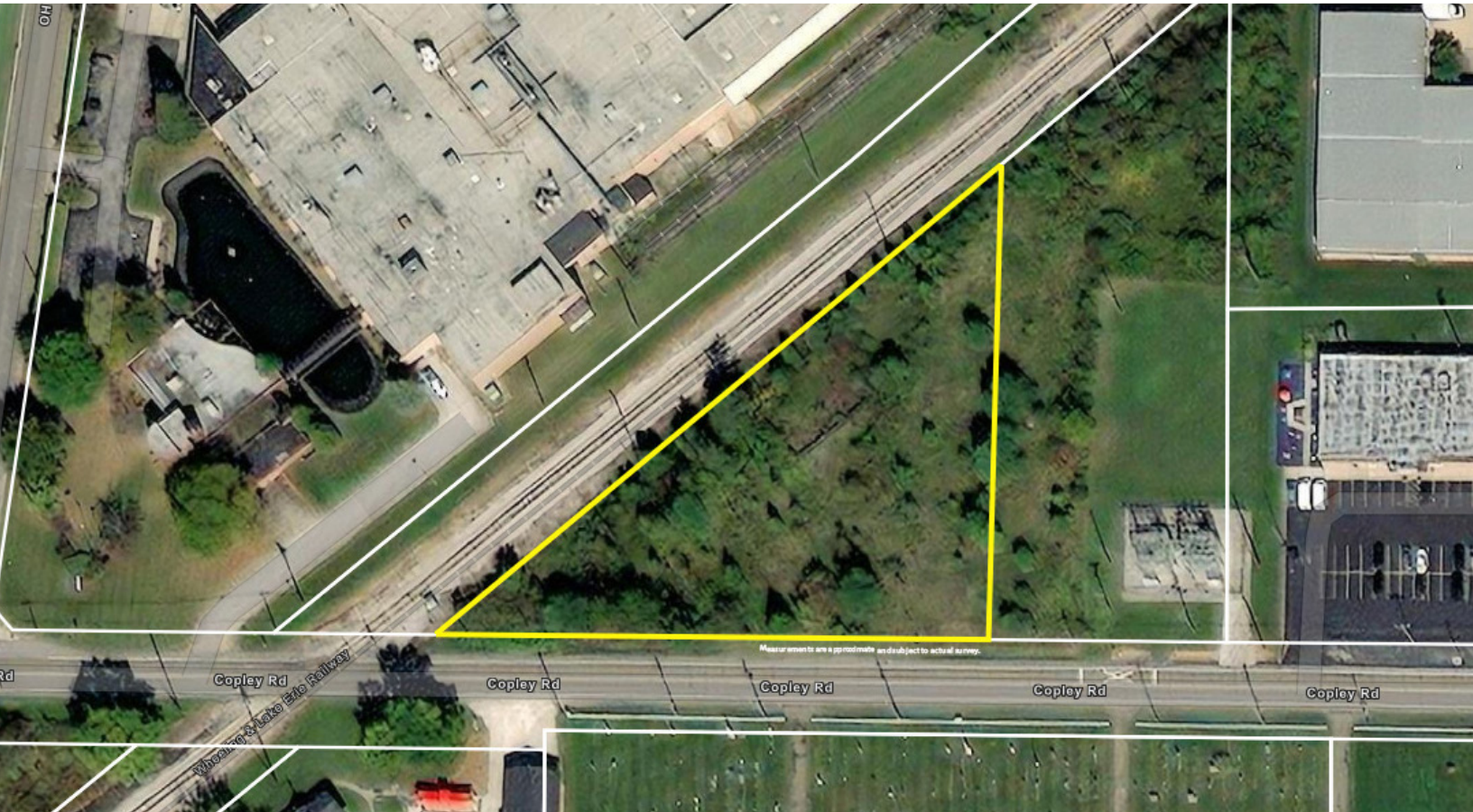


ONLINE ONLY AUCTION

BIDDING ENDS: THUR, OCT 9, 2025, 12:00 PM



LAND



Real estate features Summit Co. parcel #1502073 totaling 1.38 acres of land, zoned I-1 industrial. Adjoins railroad along west property line. Approx. 360' frontage on Copley Rd. Public water out front, sewer scheduled to be installed in 2027. Walk this land at your convenience. Call George Kiko for more details or visit www.kikoauctions.com.

Real Estate Terms: 10% down auction day, balance due at closing. A 10% buyer's premium will be added to the highest bid to establish the purchase price. Any desired inspections must be made prior to bidding. All information contained herein was derived from sources believed to be correct. Information is believed to be accurate but not guaranteed.

Auction By Order Of: Robert McNamara, Trustee of The William J. Horvath Family Revocable Living Trust.



GEORGE P. KIKO
AUCTIONEER/REALTOR®
330.418.1095
george@kikocompany.com

**1.38 ACRE
INDUSTRIAL LAND
HIGH VISIBILITY & HIGH
TRAFFIC COUNT**
Summit Co., OH, Copley Twp.

**LOCATED NEAR:
3773 COPLEY RD.,
COPLEY, OH 44321**

www.kikoauctions.com | 800.533.5456

Information is believed to be
accurate but not guaranteed.
KIKO Auctioneers



Scan for auction
details, including
directions.

*Absolute Auction.
All sells to the
highest bidders
on location.*